



MITRE NEWS

Edition #001

February 2025

“

Together we help every child
to flourish, opening doors
to fulfilling futures

”



CONTENTS



01

CEO Welcome & Introduction

In our first edition, MITRE CEO, Matthew Parris, outlines our Trust mission and highlights details pertaining to our Trust PL Day on Friday 14th February 2025. This section also includes information about how to access the All Staff MITRE Sharepoint.

PAGE 4

02

Trust Development

Find out more about the new Sixth Form Centre at National Church of England Academy, from Head Teacher Martin Brailsford; MITRE Central Team staff and their responsibilities are outlined, and details about current and new schools joining our MAT family.

PAGE 6

03

Celebrating Our Schools

In each edition of MITRE news we will include some spotlight articles about schools. There is far too much to celebrate in one edition so if your school doesn't feature this time there will undoubtedly be an article coming soon!

PAGE 12

04

Trust Opportunities

Professional learning opportunities for MITRE employees – how to find out more. This section also includes information relating to TES Pulse Survey and support and wellbeing services available for all MITRE staff.

PAGE 18

01

WELCOME



Matthew Parris
CEO, MITRE

Our trust mission is that “Together we help every child to flourish, opening doors to fulfilling futures”

Welcome to the first edition of what will be our regular news update for MITRE employees, governors and volunteers. As a growing multi-academy trust there is much to celebrate and there are a range of opportunities which it is important for us to share with you all.

Our trust mission is that “Together we help every child to flourish, opening doors to fulfilling futures”. This year across MITRE we are focusing on how we help children with special educational needs to flourish and succeed and this will be the focus of our professional learning day on Friday 14th February.

On the day we are looking forward to welcoming two keynote speakers. Further information can be found opposite.

We hope that colleagues leave the day with new ideas of what they can do to make a real positive impact to children with SEND. There will also be the opportunity to attend two workshops exploring aspects of SEND, working with colleagues from other schools, sharing best practice and learning new strategies and approaches.

There is a range of ongoing professional learning and training

opportunities from which staff in MITRE schools can benefit, such as the “SEND Hot Topic” sessions and networks for teaching assistants and SENCOs. You can find out more about our professional learning offer later in this newsletter.

We are developing a SharePoint site for all our employees where you will be able to access information to support you in your work and to find the information you need. This is in its infancy and can be accessed using the link or QR code at the bottom of the opposite page. Please consider saving this link to your browser for future easy access.

As always, thank you for all you do to support the children and young people that attend our schools and your commitment to make a difference to their futures and aspirations.

Matthew Parris
CEO, Minster Trust for Education

KEYNOTE SPEAKERS - SPOTLIGHT



Professor Zachary Walker

Professor Zachary Walker serves as the Head of Department for the Department of Psychology and Human Development at the University College London (UCL) Institute of Education. He is a Certified Executive Coach and serves as the Academic Director of both the UCL Laidlaw Scholarship Programme and the Leading Change in Education Programme. Zachary is recognised as an expert in individual and organisational learning performance, working with schools, organisations and policymakers in more than 35 countries. His current work focuses on Generation Z, educational neuroscience, and high performance leadership. His style is both provocative and uniquely uplifting.



Professor Anna Remington

Professor Anna Remington is Director of the Centre for Research in Autism and Education at UCL's Institute of Education. Anna's research, which involves directly collaborating with the autistic community, focuses on superior abilities - specifically how autistic people see, hear and feel things in a different way from others and how these attentional and perceptual advantages might confer performance benefits within education and employment. Her work offers practical solutions to support sensory challenges that autistic people experience, and shifts the autism narrative away from deficits and disorders towards a strengths-based approach. Anna's findings have been published in the leading journals within the field, and she is regularly invited to present her research both nationally and internationally.

MITRE ALL STAFF SHAREPOINT

<https://minstertrustforeducation.sharepoint.com/sites/MITRE-AllStaff/>





02

A NEW SIXTH FORM CENTRE AT NATIONAL CHURCH OF ENGLAND ACADEMY

AN UPDATE FROM

Martin Brailsford

Head Teacher

These are exciting times at National, but if you were not sure how a New Sixth Form decision came about or how things are going, this may help.

In 2016, National Church of England Academy, in collaboration with

another Trust and 2 other schools, opened a joint Sixth Form provision in the Centre of Hucknall. The joint venture made sense and was successful at that time. However, in 2020, leaders and trustees felt that the school may be better served



permanently joining a Trust whose vision and values aligned more closely with our own and National eventually went on to join MITRE.

The children we serve at National move through KS3 and KS4 on our main site and receive an education very much 'The National way', receiving consistently high standards of education. Educationally, culturally and sustainability wise, bringing the Sixth Form back to our main site makes perfect sense. It brings many benefits for our children both short and longer term and promotes a strong sense of belonging within their home Academy.

Financial investment is made jointly

between National and MITRE and secures the long term access to a Sixth Form provision for our children and the best education possible on-site for many years to come and the project is progressing well. Planning permission was granted in October 2024 and the site location was cleared and the foundations completed by Christmas. The Leadership Team at National, our site manager, together with leaders at MITRE, have been working on planning permission, educational plans, policies, systems, building designs, IT, and marketing and promotional material for over 18 months. The building itself will be able to hold around 200 people, with 4 classrooms, a large learning resources centre, canteen, toilets and

office and meeting room space. The new Sixth Form Centre is scheduled to be opened for September 2025.

If you would like to see how the project progresses, we will add 3 or 4 examples of drone footage to the news section of our website for you to view as things take shape – one is available now. Next step, the steel frame!

Scan the QR code to find out more!



MITRE CENTRAL TEAM

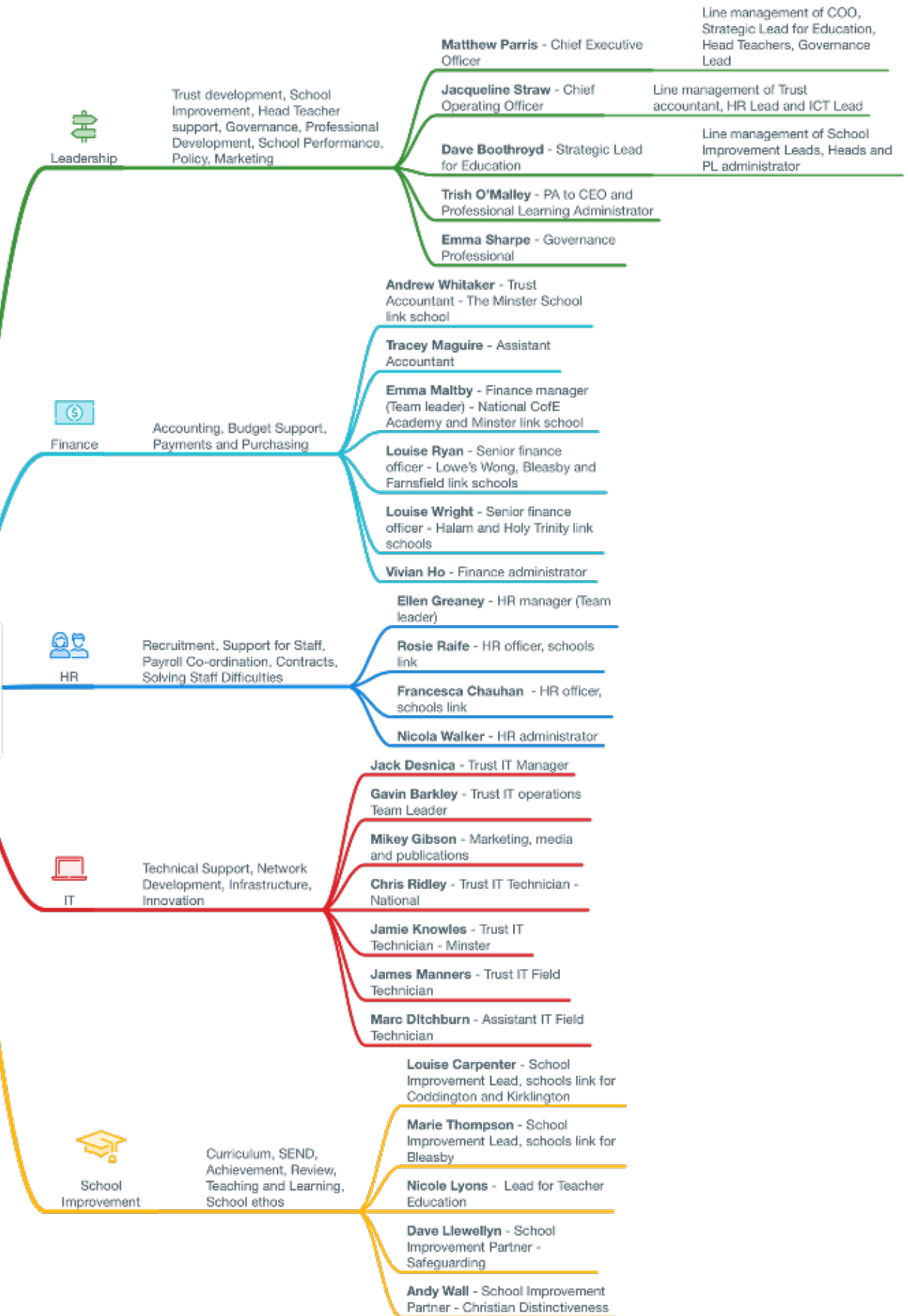
We are fortunate to have a committed team here in Eakring that works with individual schools to support them in their work with pupils and students. We have some new faces and some well-established team members who have been here since the beginning. Full contact details for all MITRE staff are available on our “all staff” SharePoint and the following diagram gives you a picture of the team as a whole and their roles.

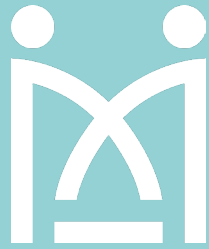
Central Office:

T - 01636 551122

E - enquiries@mitretrust.org.uk

A - Minster Trust for Education, Rufford Court, Wellow Road, Eakring, Newark, NG22 0DF





NEW SCHOOLS JOINING OUR GROWING MAT

MITRE now has 8 schools working together, with the trust coming up to its 7th birthday in March.

Our current schools are:



The Minster School



Farnfield St Michael's
C of E Primary School



Bleasby C of E
Primary School



Holy Trinity C of E
Infant School



Halam C of E
Primary School



National Church of
England Academy



Lowe's Wong
Infant School



Kingsway Primary School

A number of other schools have been working with the group as they continue the process of becoming an Academy and joining the trust. We are really pleased and excited to be welcoming them in coming months.



Coddington Primary School

Coddington CofE Primary School has been participating in many trust activities, including our leadership groups, professional learning activities and annual review processes. The trust has worked with the school over a number of years to support its curriculum development, early years provision and teaching and learning and it has been a pleasure to be part of the journey to develop the strong offer now in place for pupils.

Coddington will be joining MITRE on 1st March 2025.



Lowe's Wong Anglican Methodist Junior School

Lowe's Wong Anglican Methodist Junior School is the main feeder for The Minster School and has worked with many other MITRE schools over many years as part of the family of schools. It has been a pleasure to work more closely in partnership with the school over recent years as they work towards academy conversion, through reviews and in the development of the school's curriculum strategy. Leaders from the school have also supported trust activities including in mental health and well-being, leading a primary moderation group and participating in the development of a trust sustainability plan.

Lowe's Wong Juniors is due to join MITRE in July 2025.



Kirklington Primary School

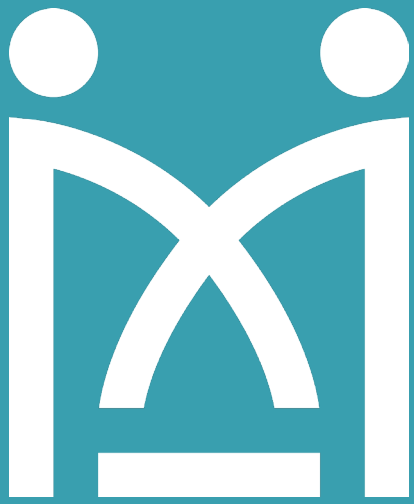
Kirklington Primary School offers a supportive climate for its pupils in a small school rural setting with a particular expertise in outdoor education and learning. The school has been working with other MITRE schools as part of the Minster family and has participated in reviews, both being reviewed and providing members to review teams. Governors at the school are already fully engaged in MITRE governance networks and training and leaders have contributed to the development of sustainability plans. The Head of School also leads the MITRE Primary Leaders Network.

We look forward to Kirklington fully joining the trust in July 2025.



Additionally and very recently, The Kite Primary Federation was successful in its application for an academy order to join MITRE. Although in its very early stages, we at the trust are looking forward to working to support the schools with their provision for children on the way to academisation. The Kite Federation is St Matthew's CofE Primary School and Norwell CofE Primary School. You can find out more by visiting their website:

<https://www.thekiteprimaryfederation.co.uk>



CELEBRATING

OUR

SCHOOLS

03

NG

In each edition of *MITRE* news we will include some spotlight articles about schools. There is far too much to celebrate in one edition so if your school doesn't feature this time there will undoubtedly be an article coming soon!

Minster School musicians tour the Italian Lakes

THE MINSTER SCHOOL

PERFORMING ARTS OCTOBER 2024

During October half term 70 students and accompanying staff set off from The Minster School in Southwell, following several weeks of rehearsals, planning and concert preparation. Destination – Lake Garda!

The tour combined the opportunity to visit local sites and cities, to soak up the culture and most important to perform three concerts at a range of venues including a luxury hotel, at the San Zeno di Montagne chestnut festival and at the beautiful chapel of Villa Elena da Persica di Affi.

Audiences at each of the concerts were highly appreciative of the students' talents and quality of performances. Each venue and concert offered a unique and very different experience but the



Seventy musicians from The Minster School on
tour in the Italian Lakes during October half term.

“We are incredibly proud of the musicians, both in their conduct whilst exploring Italy and in the performances they gave”



common thread was the quality of the performances and the enthusiastic reception received. At the final concert around 100 people arrived to enjoy the concert. The students were totally deserving of the standing ovation they received and, as the choir stood around the amphitheatre-style venue to perform the requested two encores with the orchestra, it was a perfect end to three brilliant concerts on the tour.

In addition to all the music-making there were opportunities to visit local sites including Lake Garda, the city of Verona and Gardaland, offering high-adrenaline thrill rides and a chance to have great fun.

As the tour came to an end, students reflected on lots of new and different experiences, both musically and culturally. New friendships have been formed, and lots of amazing memories made. Mrs Wallis-Windle, Director of Music, Head of Performing Arts and

Associate Assistant Head Teacher said ‘we are incredibly proud of the musicians, both in their conduct whilst exploring Italy and in the performances they gave. They were respectful, polite, engaged, resilient, kind, supportive, enthusiastic, and a genuine joy to be on tour with. We are so proud of them, as The Minster School students, but also as the brilliant young people they are.’

The Minster School Performing Arts Department

Find out more on their social media pages...

Bumblebee-friendly Schools Gold Award for Lowe's Wong Infant School

Lowe's Wong Infant School have achieved the Bumblebee Conservation Trust's "Bumblebee-friendly Schools Award". There were four strands to the work involved, "curriculum", "habitat", "community" and "monitoring".

For the curriculum strand, every year group watched a presentation from the Bumblebee Conservation Trust and learned how to identify different bumble bees. The school also enjoyed an enrichment day, themed around bees and the children learned about

different types of bees, the habitats bees live in, and why it is important to protect bees. They also did bee themed crafts as well as having fun dressing up!

In order to involve the community, bee surveys were completed with families at home, and information was shared about bees and the work being done on school social media pages.

A lunchtime "Bee Club" was formed, who designed a bee friendly garden for the habitat strand. They approached local garden centres who kindly donated "bee friendly" plants, which the children planted in the new bee friendly garden. On our "Bumblebee Day" the children in Bee Club carried out another bee survey in the new garden, as part of our monitoring, and were very excited when bees were seen!

The school was delighted to hear last term that they had achieved Gold level.

Members of Lowe's Wong Infant School in the garden



 **Bumblebee Conservation Trust**

Bumblebee-friendly Schools Gold award October 2024

SIAMS success at Bleasby

All Church schools are subject to The Statutory Inspection of Anglican and Methodist Schools (SIAMS) framework and our most recent school to undergo inspection was Bleasby who were visited on Friday 13th December. The school has worked hard over a period of time to develop its provision for children in a range of areas considered through a SIAMS inspection. During the inspection their Christian vision shone through and all staff (especially Russyn as Head) articulated how they offer a rich and spiritual experience.

Quoting from the report, “The strong, Christian vision, and supporting values, permeate every aspect of life within this school. It is recognised, used and referred to by adults and children, within and beyond the school walls. Members of the school community are valued and celebrated as unique individuals.”

Well done to all.



“

The strong, Christian vision,
and supporting values, permeate every
aspect of life within this school.

”

Professional learning opportunities for MITRE employees – how to find out more

The MITRE People Strategy was introduced last year and outlines our commitment to all employees across the trust. One key element of the People Strategy is investing in every member of staff by providing them with access to a rich range of professional learning, enabling them to grow to be the best they can be in their roles and supporting them to achieve their future career ambitions. In addition to the range of professional learning provided by each school, you will already be aware of our annual Professional Learning Day, an opportunity for colleagues from right across the trust to come together for a conference event in February.

However, you may not be aware that MITRE provides or supports access to a much wider range of programmes, courses, networks and professional opportunities that are designed to support you in your role. This includes nationally recognised programmes (such as the National Professional

Qualifications) industry-standard qualifications linked to roles in HR and finance, networks and moderation groups for teachers and teaching assistants, and our own programmes developing leaders, teachers and teaching assistants provided by the Minster Learning Alliance. There is also a wide range of additional training available to you through TES Develop and external providers such as the Local Authority. There are also a range of opportunities to develop in your role through shadowing, delivering professional learning and becoming a MITRE Leader of Education.

To support colleagues in benefitting from these additional opportunities, we have produced a series of brochures that highlight what is available to you, whatever your role in supporting children in our schools. There are brochures aimed at Leaders, Teachers, Teaching Assistants, Support Staff and those involved in

Safeguarding and Pastoral Care, and you can find them on the MITRE 'All Staff' SharePoint site.

Each brochure provides information on professional learning, who each opportunity is aimed at, links to find out more and how to go about booking a place. If you have any questions or would like to discuss Professional Learning opportunities further, please contact Trish O'Malley, MITRE Professional Learning Co-ordinator, who will be happy to help: p.omalley@mitretrust.org.uk

With such a wide range of professional learning, we are always keen to hear from colleagues who are interested in becoming a part of our team delivering courses and leading networks. If you would like to support existing professional learning or have a suggestion for the future, please contact Dave Boothroyd, Strategic Lead for Education: d.boothroyd@mitretrust.org.uk

TES Pulse and having your say

04

Employees in MITRE schools receive an email encouraging them to feedback using the TES Pulse survey tool every few weeks. Thank you to all who take the very quick survey; it is considered by leaders in each school and also by central trust leaders. Your responses are influential and we encourage as many as possible to complete the survey on a regular basis, which provides the most helpful information over time.

Support and well-being services for MITRE staff

Every MITRE employee has access to wide-ranging services from the Schools Advisory Service. These are extensive and freely available to help and support you in a wide range of areas, as summarised in the diagram below.

Many of our staff have benefited from services provided by SAS and are often surprised by what is available to them. The best way to find out more about what they have to offer, and to keep an eye on latest updates, is through the Apps available to be downloaded on your phone. This also gives you very straightforward ways to access the services.

The App is available for Apple devices and also through Google Play.

Alternatively you can visit the Schools Advisory Service website.



School Wellbeing

At the heart of education
Designed for iPad. Not verified for macOS.





MINSTER TRUST FOR EDUCATION

T - 01636 551122

W - www.mitretrust.org.uk

E - enquiries@mitretrust.org.uk

Rufford Court,
Wellow Road,
Eakring,
Newark,
NG22 0DF