



**Minster Trust**  
for education

**A cross-phase multi academy trust with a collaborative culture; built on a track record of success; pursuing the best education for pupils**

# WELCOME

The Minster Trust for Education (MITRE) is a multi-academy trust which has at its core a collaborative model of leadership and a belief in sharing expertise while unerringly pursuing the best education for pupils in its schools.

The trust's growing number of partners are a cross-phase group of schools committed to working together as a multi-academy trust to both secure and continue to improve the best quality of education for their pupils. Our partnership includes schools in towns and villages in Nottinghamshire.

Each MITRE school is unique and wishes to remain so, while sharing a common commitment to both educational and character development for all pupils across the partnership. The trust works closely and individually with each school to provide an education with outstanding outcomes and a wider holistic and enriching experience.

MITRE has an aspiration to grow, with other schools who share our goals joining us so that we might work together for the highest quality of education in our part of the East Midlands.

MITRE can call upon extensive expertise to achieve its aims with a large learning alliance of schools, experienced school leaders with a track record of school improvement and high-quality professional services. The trust is founded on Christian principles which translate readily into any school context.



**Unique Schools with a shared collective purpose and strong alignment -**  
working with diverse schools across phases



**Collaboration and professional development -**  
a track record of success in professional learning and staff development



**The capacity for educational excellence -**  
experienced professionals and leaders to support improvement



**Sustainability and business support -**  
cost-effective solutions and central services



**Joining MITRE affords your school the chance to be part  
of a strongly principled and collaborative MAT,  
supporting schools to excel**

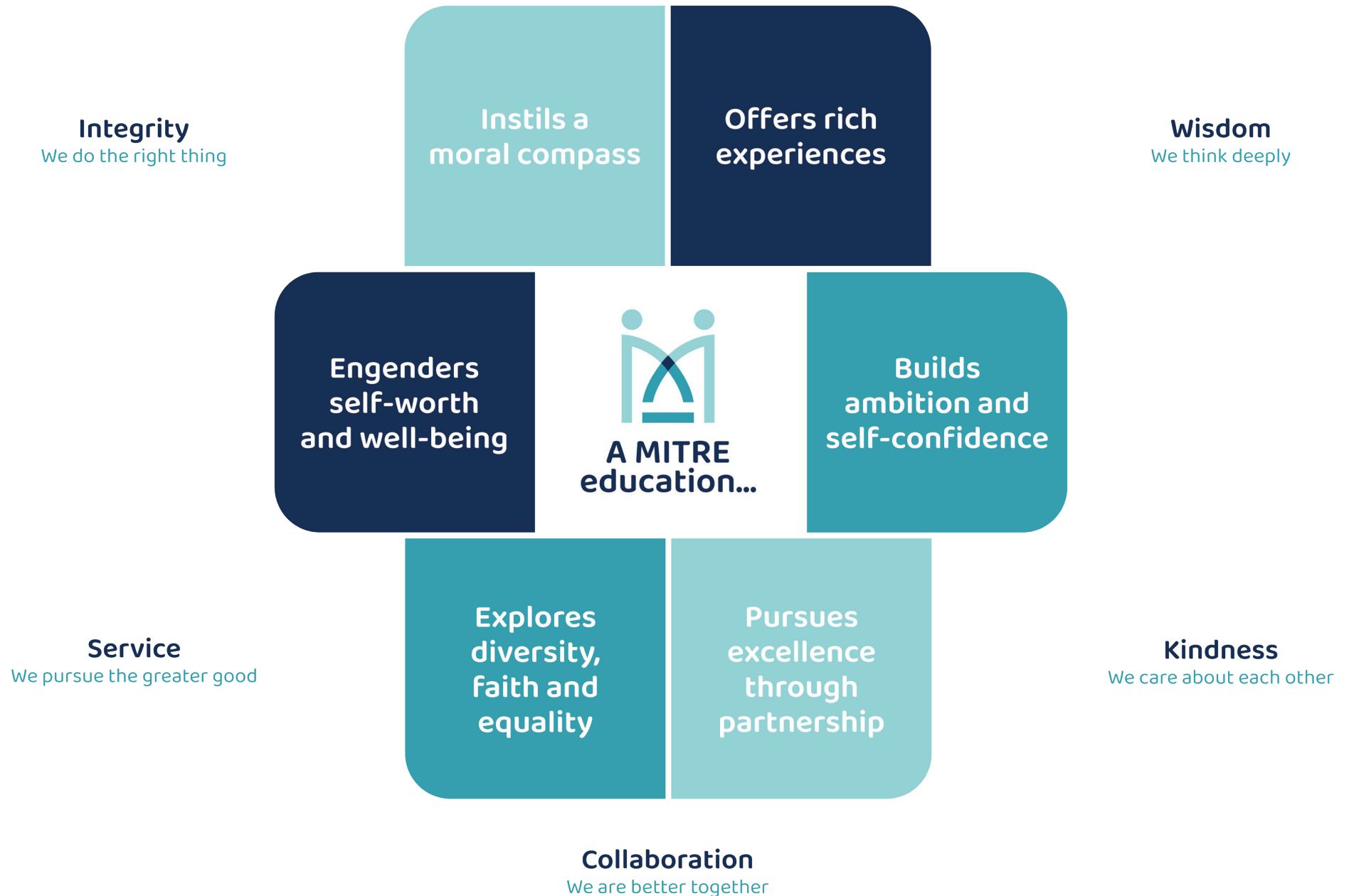
# OUR VISION

Our vision for education underpins all work throughout the organisation. We are truly values driven. Our expert Board of Trustees hold leaders to account for the delivery of a “MITRE education”. Decisions made at all levels demonstrate our core values in practice.

Our partner schools take a collective responsibility to realise our shared vision, working together to align best practice for the benefit of pupils.



# 'Together we help every child to flourish, opening doors to fulfilling futures'



# SCHOOL IMPROVEMENT

**School improvement sits at the heart of our work and draws upon considerable expertise and capacity.**

Our school improvement lead works closely with other specialist MITRE school improvement experts to support the provision of a high-quality MITRE education to all pupils in our partner schools. The team includes:

- MITRE school improvement lead
- Primary leadership support practitioners
- MITRE safeguarding lead
- MITRE SEND lead
- Minster Leaders of Education, each with specific specialist skills and knowledge

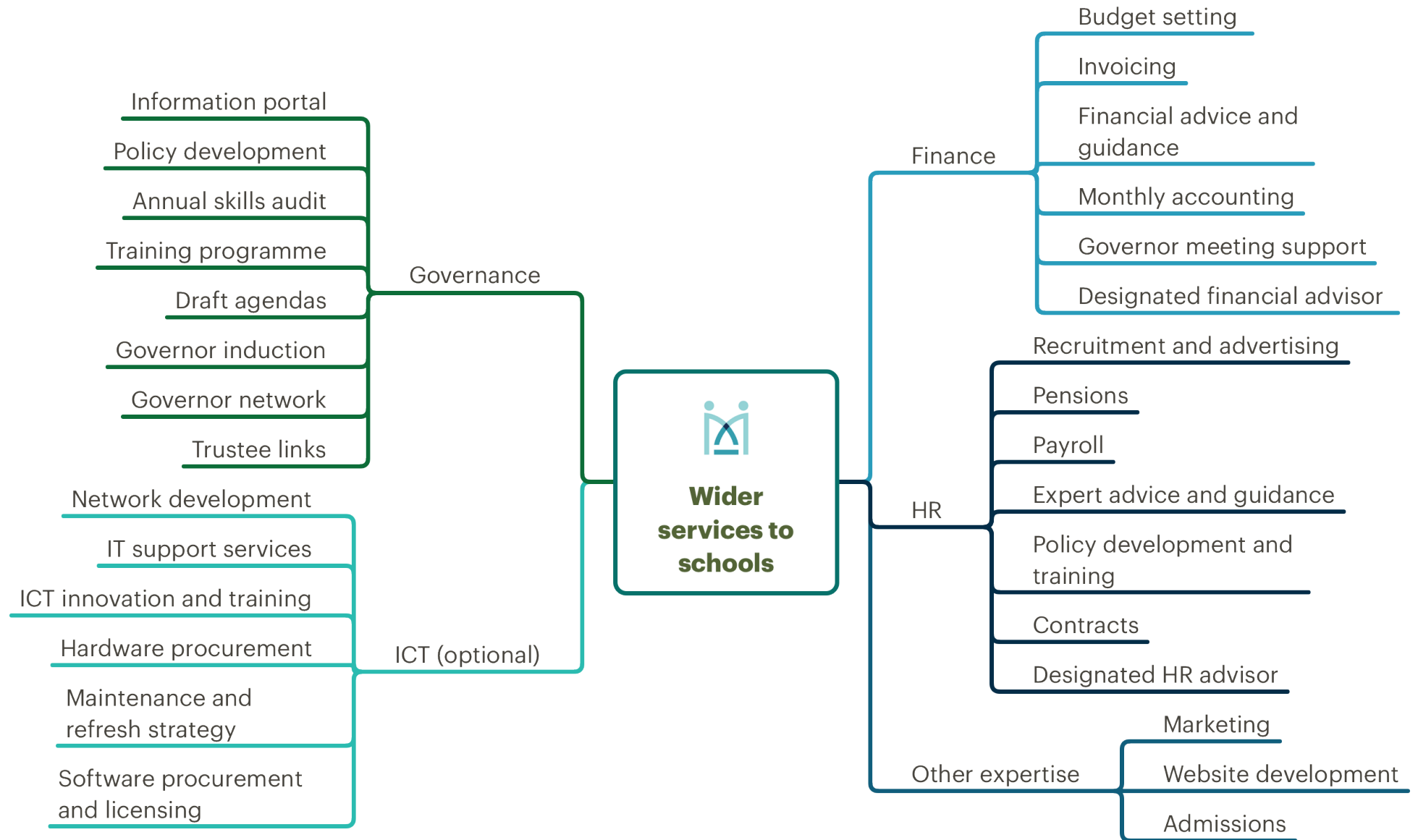
As the Trust grows so will this team, with opportunities for experienced staff from partner schools to share their expertise as part of the MITRE team.

Every year our schools benefit from a rich calendar of school improvement activity.

- Professional learning programmes for staff based on identified need
- Bespoke deployed school support
- Fortnightly partnership meetings
- Senior leaders strategy group
- Themed networks
- Annual review of Quality of Education
- School improvement meetings
- Annual MITRE professional learning day



# SUPPORT SERVICES



# FURTHER INFORMATION

To find out more about the Minster Trust for Education and how it could support your school to excel, visit the MITRE website at [www.mitretrust.org.uk](http://www.mitretrust.org.uk)

Call us for an individual conversation with the CEO, Matthew Parris who will be pleased to share more detail with you and meet to discuss possible MITRE membership.

Tel: 01636 551122

Follow us on Twitter [@MITRETrust](https://twitter.com/MITRETrust)



# MITRE PARTNER SCHOOLS

Bleasby Church of England Primary

Farnsfield St Michael's Church of England Primary

Halam Church of England Primary

Holy Trinity Church of England Infant School

Lowe's Wong Infant School

National Church of England Academy

The Minster School



NATIONAL  
CHURCH OF ENGLAND  
ACADEMY



## CONTACT US

Minster Trust for Education  
Rufford Court  
Wellow Road  
Eakring  
NG22 0DF

Tel. 01636 551122  
[enquiries@mitretrust.org.uk](mailto:enquiries@mitretrust.org.uk)  
[www.mitretrust.org.uk](http://www.mitretrust.org.uk)

Minster Trust for Education (MITRE) is a company limited by guarantee, registered in England and Wales, number 11281594.  
Registered Office: Rufford Court, Wellow Road, Eakring, Nottinghamshire, NG22 0DF

